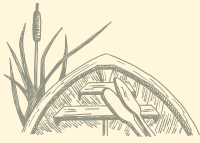




2,300 SQUARE FEET  
4 BEDROOMS  
3 FULL BATHS



*A thing of beauty* – that's Yadkin. Its optional three-dormer design and stunning front porch (built on-site) give this home exceptional curb appeal. The first floor features two bedrooms, two baths, living room, dining room and kitchen. The suggested second floor provides the home's third bath and two additional bedrooms.

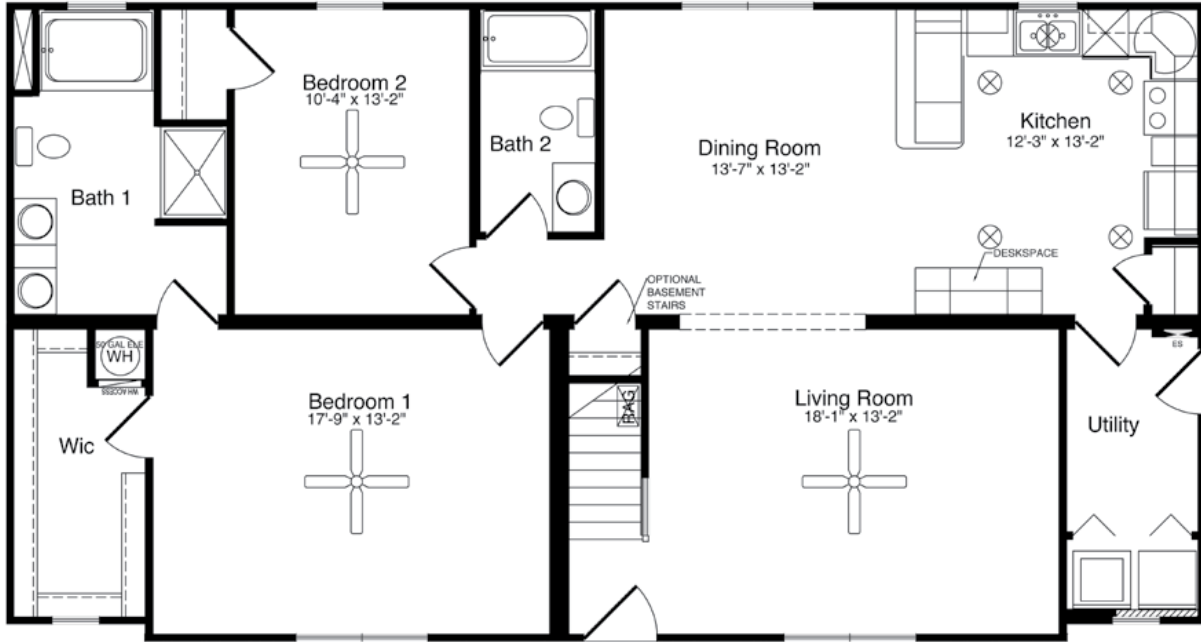


UWHARRIE HAVEN  
AT LAKE TILLERY

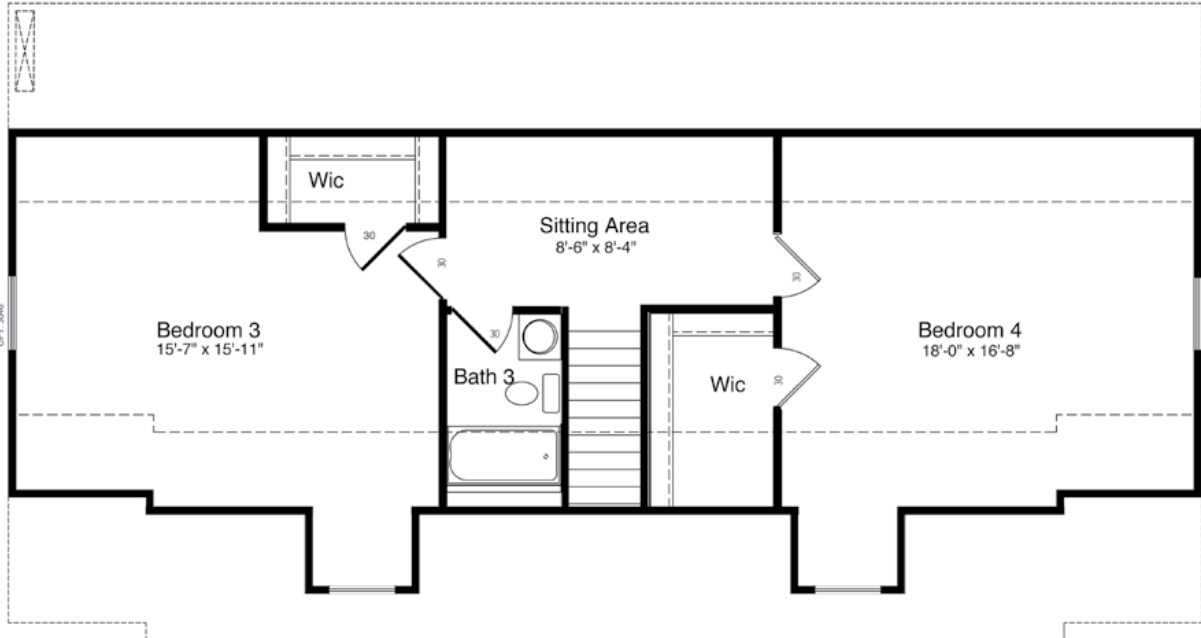
# YADKIN



2,300 SQUARE FEET  
4 BEDROOMS  
3 FULL BATHS



FIRST FLOOR



SECOND FLOOR